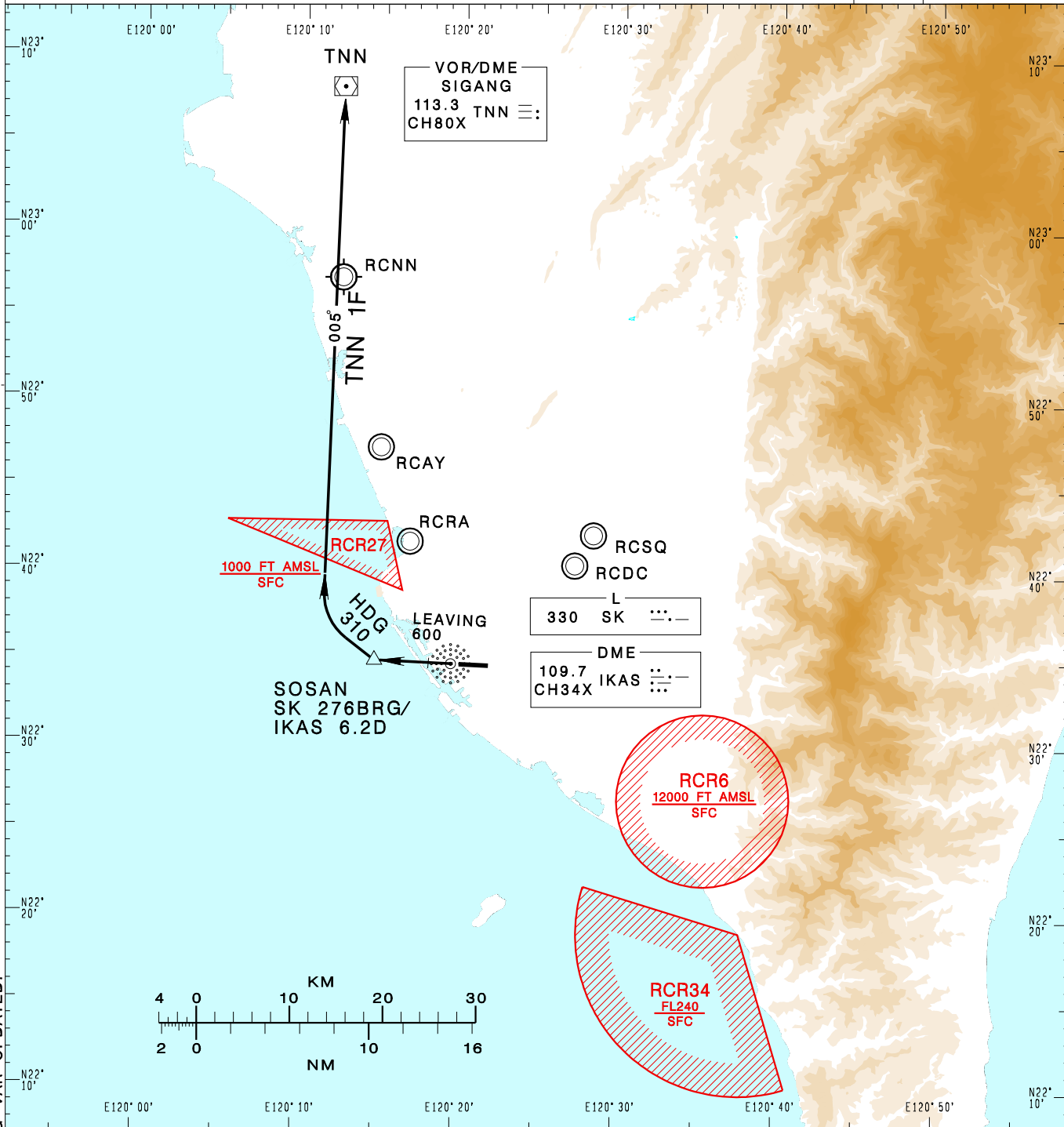


**高雄國際機場**  
KAOHSIUNG INTL AD

RCKH SID  
TNN 1F(RWY27)

KAOHSIUNG APP 124.7 125.7	KAOHSIUNG TWR 118.7 120.7	ATIS 127.8	  MSA APP 25NM	
Apt Elev: 32'		Trans Level: FL130		Trans Alt: 11,000'
BEARINGS ARE MAGNETIC; DISTANCES ARE NAUTICAL MILES; ELEVATIONS, HEIGHTS IN FEET				



CHANGES: MSA AND MAG VAR UPDATED.

**SIGANG ONE FOXTROT DEPARTURE**  
Climb on RWY HDG until leaving 600ft, then track SK 276BRG to SOSAN, then turn right HDG 310 to track TNN R-185 to TNN.

**NOTE**  
1. Minimum climb gradient required: 4%(245ft/NM) until 2,000ft.  
2. Caution: pier cranes, terrain and stacks east, west and south of the airport.  
3. ATS surveillance required.